



# Building a New Gold Camp in Atlantic Canada

**Williams Brook  
Gold Project**

New Brunswick,  
Atlantic Canada

September 2023



[explorationpuma.com](http://explorationpuma.com)

TSXV : PUMA / OTCQB : PUMXF

# Forward Looking Statement

This presentation may contain forward-looking statements such as use of words or phrases such as: is poised to, historical resource estimates, to be appointed, to create, up to, expected to cost, yet to be defined, etc. Such forward-looking statements involve a number of known and unknown risks, uncertainties and other factors which may cause the actual results, performance or achievements of Puma Exploration Inc. to be materially different from actual future results and achievements expressed or implied by such forward-looking statements.

Readers are cautioned not to place undue reliance on these forward-looking statements which speak only as of the date the statements were made, except as required by law. Puma Exploration Inc. undertakes no responsibility to publicly update or revise any forward-looking statements. These risks and uncertainties include that actual results obtained by Puma in the future may differ materially from the historical results alluded to in this presentation by others, which historical results have not been fully verified by Puma. In addition, readers of this presentation should review the risks and uncertainties that are described in the quarterly and annual reports and in the documents submitted to the securities administration. Neither the Toronto Venture Exchange nor its Regulation Services Provider (as that term is defined in the policies of the TSX Venture Exchange) accepts responsibility for the adequacy or accuracy of this presentation.

## Qualified Person

Unless stated otherwise herein, all scientific and technical data contained in this presentation has been reviewed, approved and verified by Dominique Gagné, P.Geo, a qualified person as defined by Canadian National Instrument 43-101 standards.

# Why Invest in Puma?



## Major gold discovery

Bonanza-grade gold shoots across 100 m-wide corridor. Potential for km scale depth extent.



## Strong ESG criteria

Exploration practices mindful of the environment and future rehabilitation.



## Building with First Nation communities

MOU signed with the Pabineau First Nation.



## Pro-mining jurisdiction

Excellent relationship with the New Brunswick government.



## Gold mineralization at surface

Free gold with sulfides in quartz veins – 92% recovery by gravity (initial met test)



## Proximity to infrastructure

Close to highway, powerline, airport and deep-water port facilities.



## Significant Gold potential

Shallow orogenic (or epizonal) Fosterville-style gold deposit. Gold trend extends over 4 km along strike.



## Team with loyal shareholders

60% shares owned by top 10 major shareholders / management team.

# The Largest Gold Discovery in Northern New Brunswick.

# Hot Bed of Activity In Atlantic Canada



QUEBEC

## PUMA GOLD PROJECTS

NEW BRUNSWICK

**Galway Metals**  
Clarence Stream  
TSXV: GWM

**Atlantic Gold**  
Moose River Mine

NOVA SCOTIA

**Anaconda Mining**  
Goldboro  
TSXV: ANX

**First Mining**  
Hope Brook  
TSXV: FF

**Marathon Gold**  
Valentine Lake  
TSXV: MOZ

**Signal Gold**  
Pine Cove  
TSXV: ANX

NEWFOUNDLAND & LABRADOR

**Newfound Gold**  
Queensway  
TSXV: NFG

**Labrador Gold**  
Kingsway  
TSXV: LAB

Gold Deposit

Focus on gold exploration in the Maritimes Provinces started in 2019

*“New Brunswick, Nova Scotia and Newfoundland all share a common geology”*

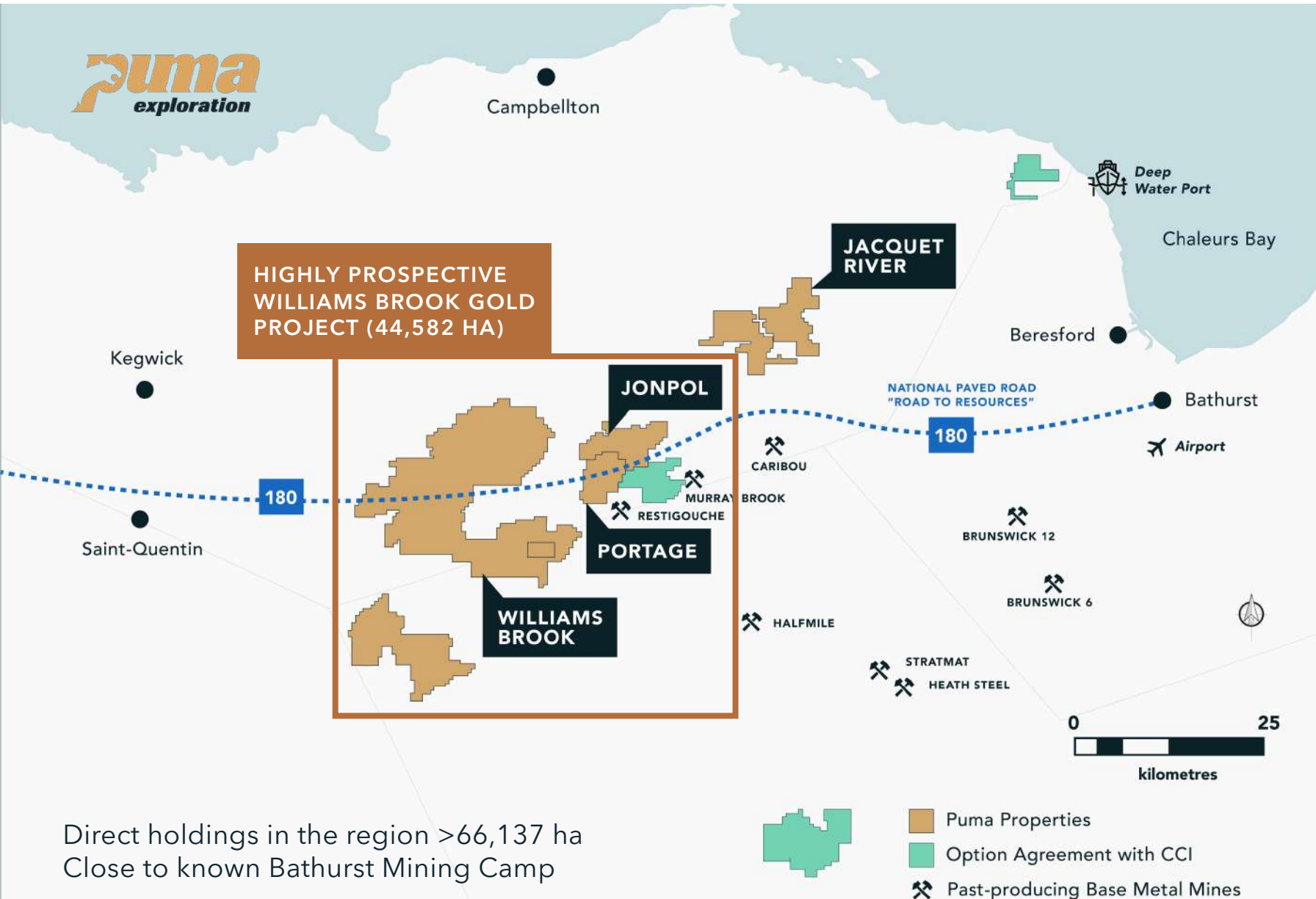
*(Canadian Appalachians)*



explorationpuma.com

TSXV : PUMA / OTCQB : PUMXF

# Major Landowner in the Region with Significant Upside



Direct holdings in the region >66,137 ha  
Close to known Bathurst Mining Camp



## Current Option Agreement with Canadian Copper (CCI-CSE)

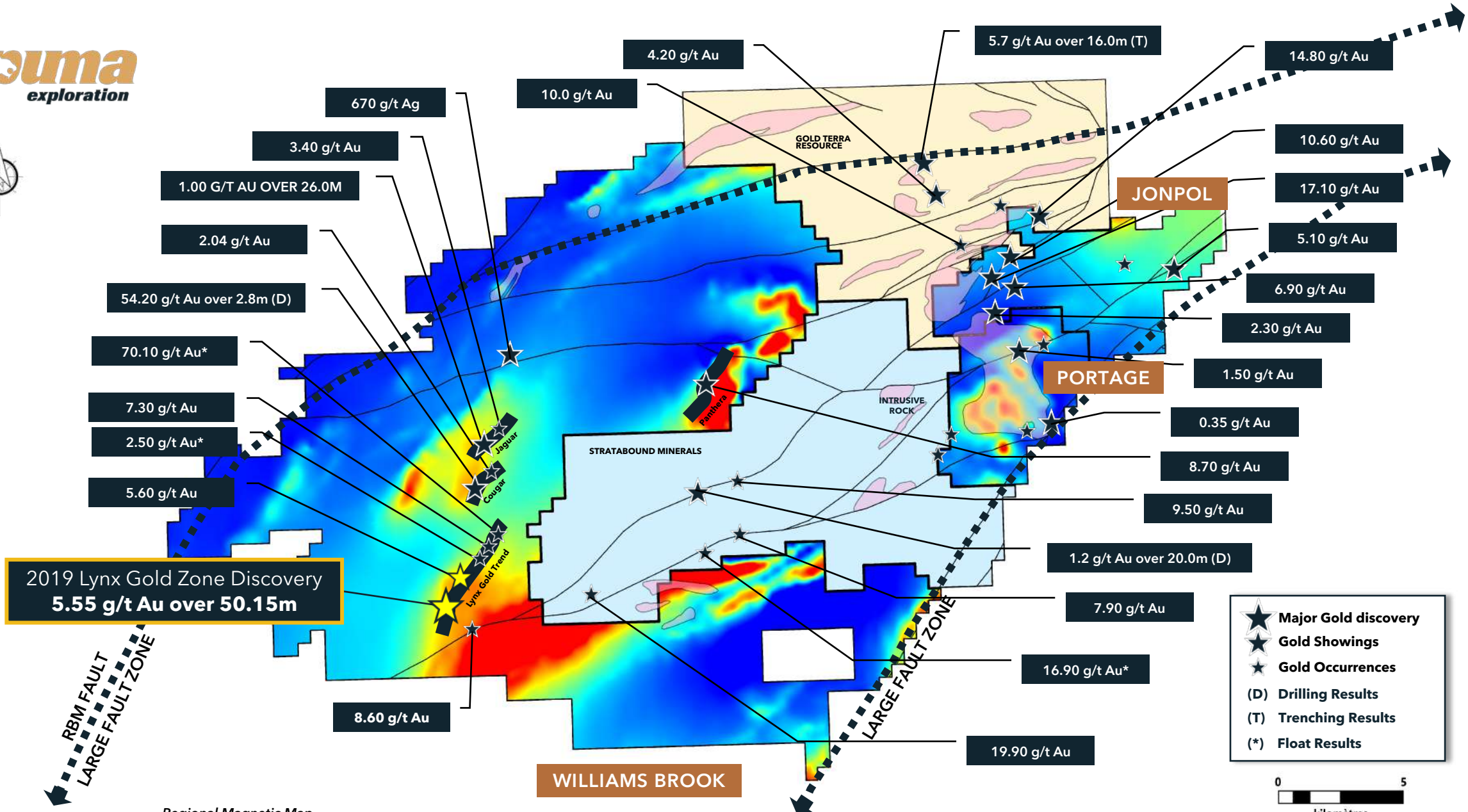
- 300,000 in shares or cash by July 2023
- \$1,000,000 in shares or cash by July 2024
- \$1,000,000 in shares or cash by July 2025

## Exploration juniors held:

- CCI-TSXV : 6,264,095 shares (8.9%)
- BWR-TSXV: 2,900,00 shares

## NSRs on 4 properties

# Building a Gold Camp at Williams Brook



# 2023-2024 Exploration



## LYNX GOLD ZONE

Trenching , stripping and mapping at the Lynx gold trend

2,500 meters of drilling at LYNX

5,000 meters of drilling at the Lynx gold trend (4km)

Initiate the bulk sample (4,000tons)

Prospection on soil anomalies

## COUGAR GOLD ZONE

Trenching , stripping and mapping at Cougar Gold Zone

## JAGUAR GOLD ZONE

First Puma 2,500 meters of drilling at Jaguar Gold Zone

## REGIONAL EXPLORATION

Prospection and mapping

Soil Survey

### Tobique Group

- Dmi** : Gabbro
- DWmv** : Massive to amygdaloidal basalt
- DWfv** : Massive to flow-layered porphyritic rhyolite
- DWvs** : Sedimentary rocks; minor felsic hyaloclastic and pyroclastic rocks, rhyolite and mudstone

\*Grab samples are selective by nature And may not represent the true metal content of the mineralized zone



**Major gold discovery**  
Impressive drill results including : 5.55 g/t Au over 50.15m.

**Gold mineralization at surface**  
High grade gold veins with free gold – 92% recovery by gravity (initial met test)

**Strong ESG criteria**  
Exploration practices mindful of the environment and future rehabilitation.

**Proximity to infrastructure**  
Close to highway, powerline, airport and deep water port facilities.

**Building with first nation communities**  
MOU signed with the Pabineau First Nation.

**Significant Gold potential**  
Multiples porphyry related mineralized domes. Low cost approach to exploration.

**Pro-mining jurisdiction**  
Excellent relationship with the New Brunswick government.

**Team with loyal shareholders**  
60% shares owned by top 10 major shareholders / management team.

# 2023 Drilling Program

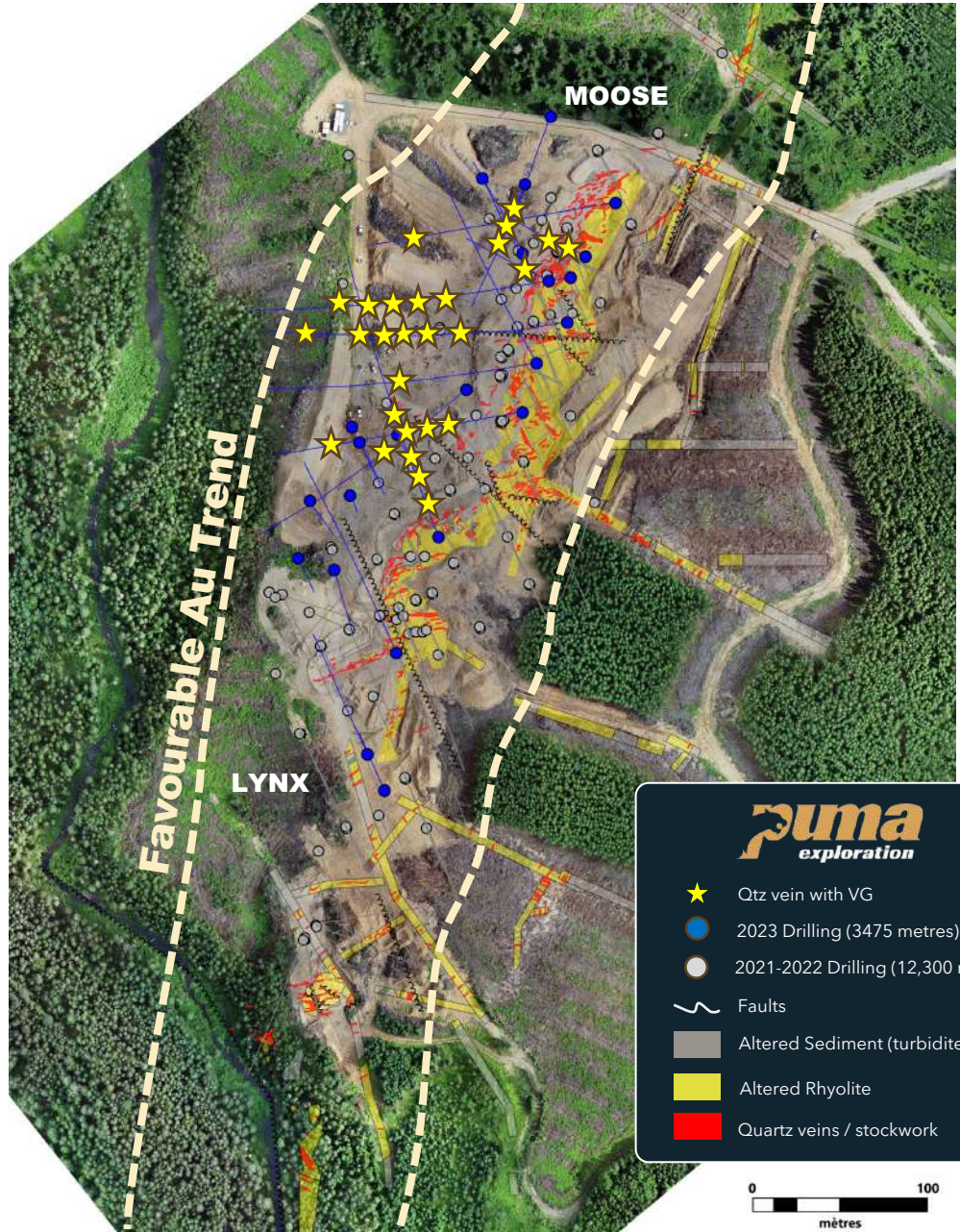
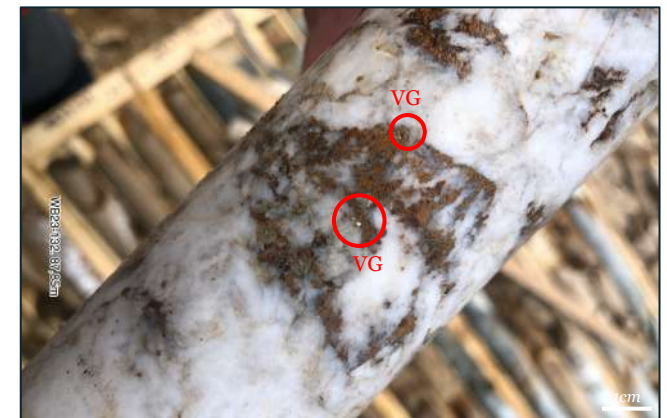
**WB23-145 (80,6m – 82,7m)**  
Qtz vein with VG + sulphides (Py-Cpy-Ga-Sph)



**WB23-144 (@161,7m – 162,7m)**  
Qtz vein with VG + sulphides (Py-Cpy-Ga-Sph)

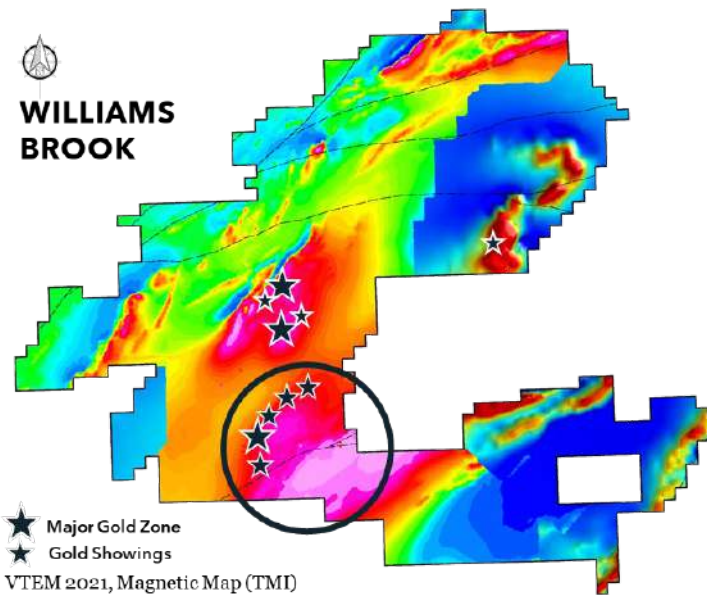
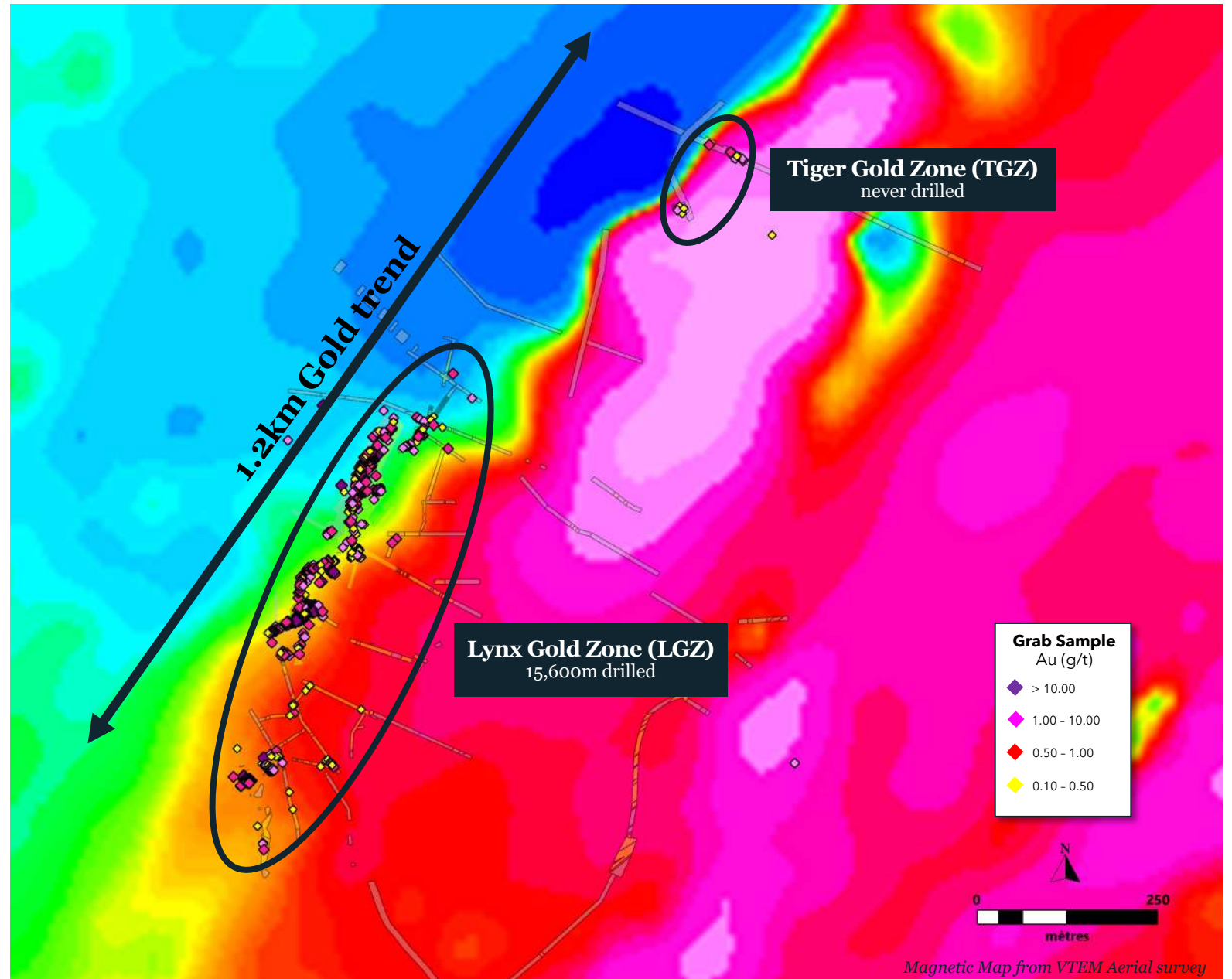
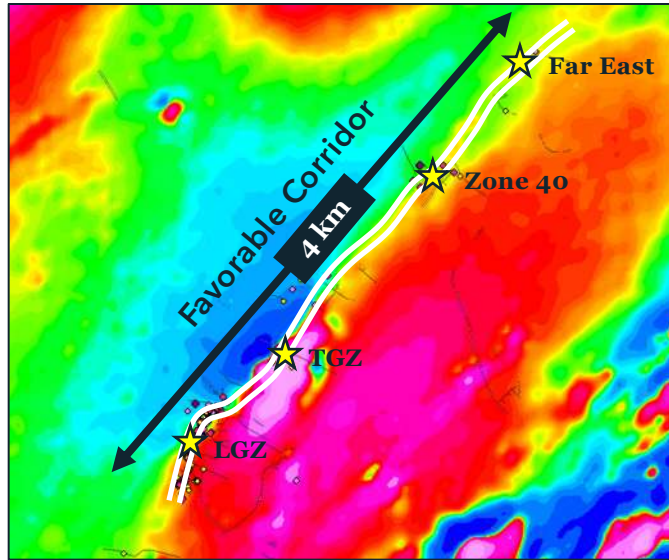


**WB23-132 (@87,8m)**



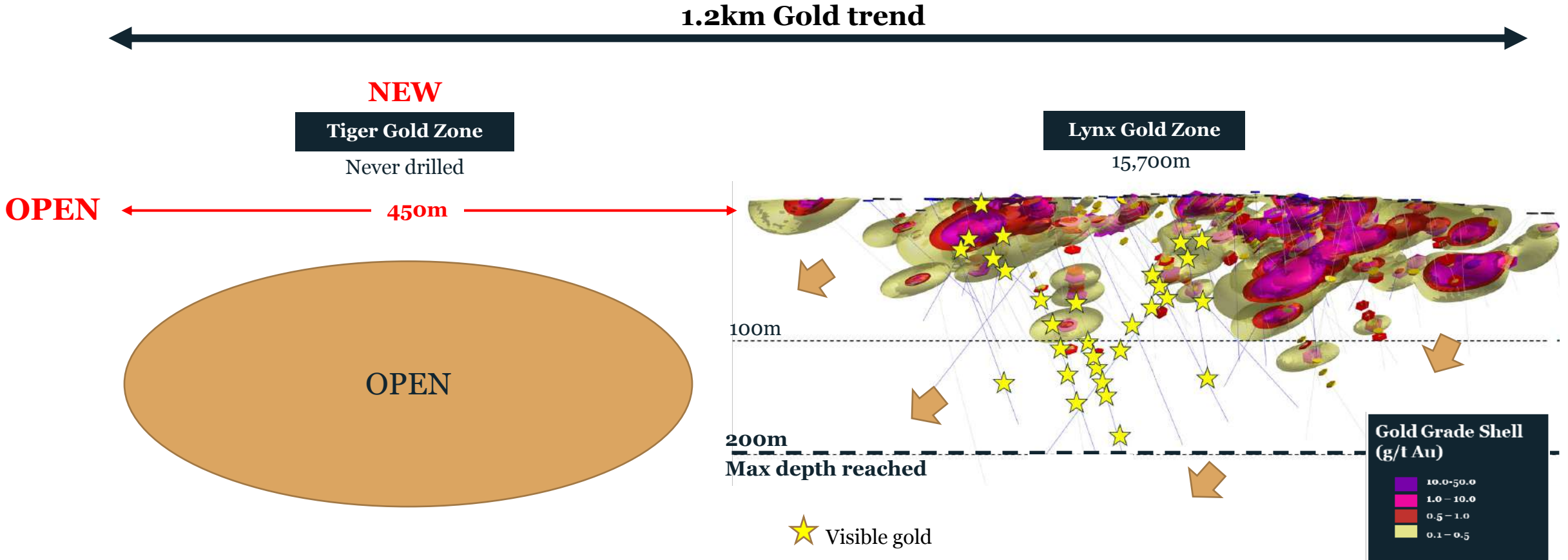


# Potential Scale within the Lynx Gold Trend

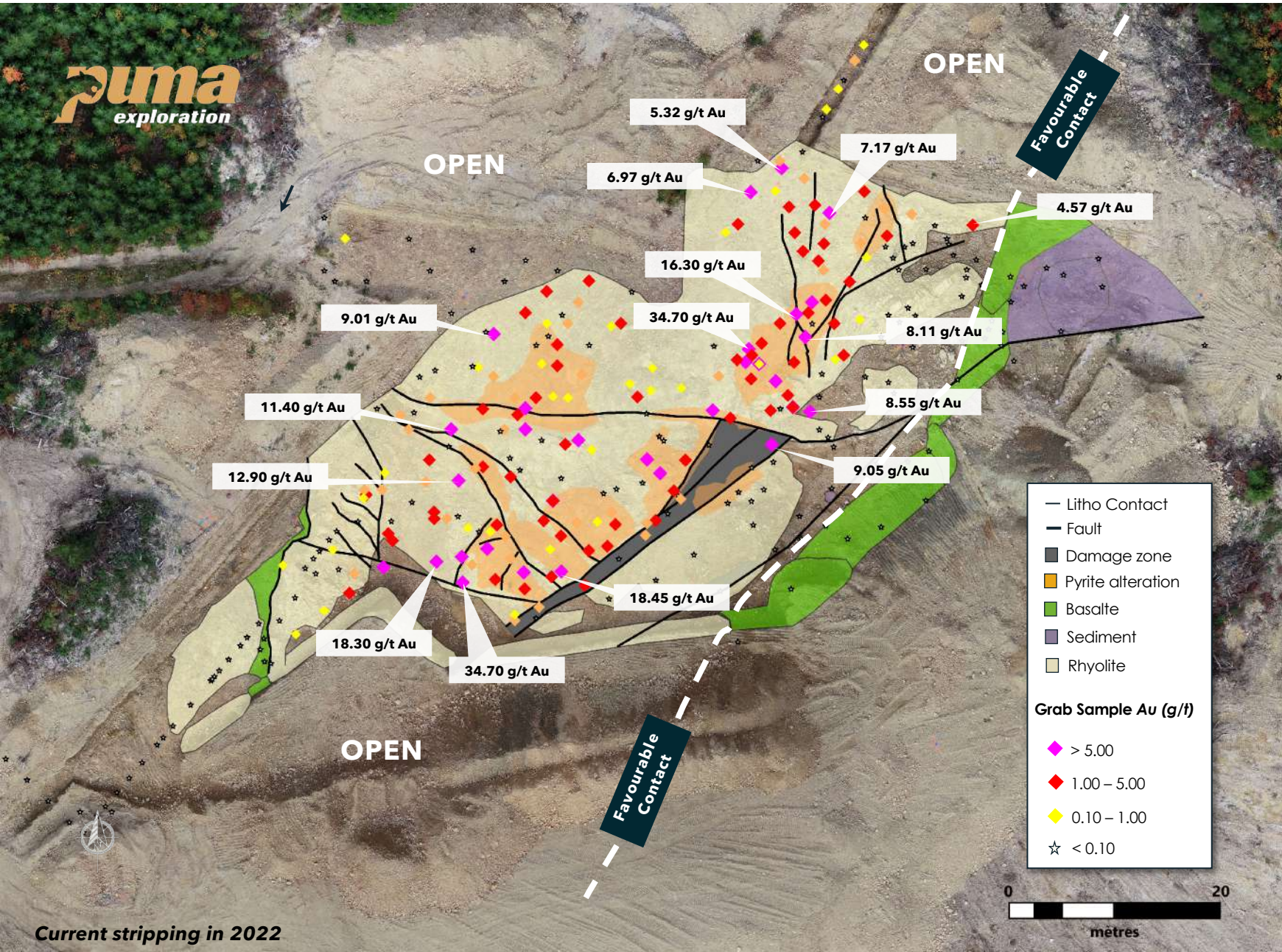


Magnetic Map from VTEM Aerial survey

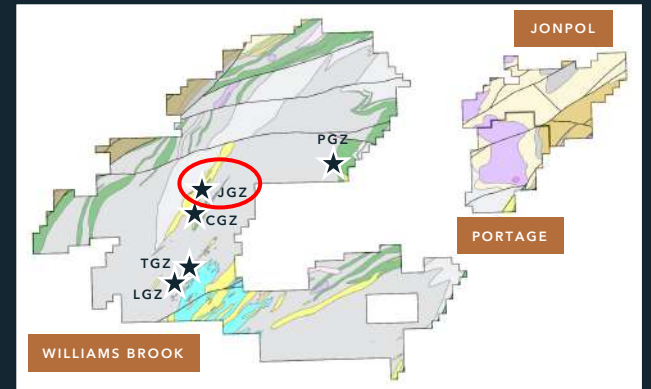
# Building Scale along the Lynx Gold Trend



# JAGUAR GOLD ZONE



Current stripping in 2022



## Drilling results

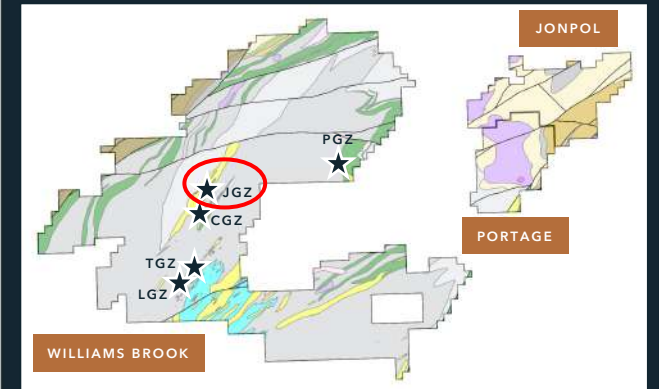
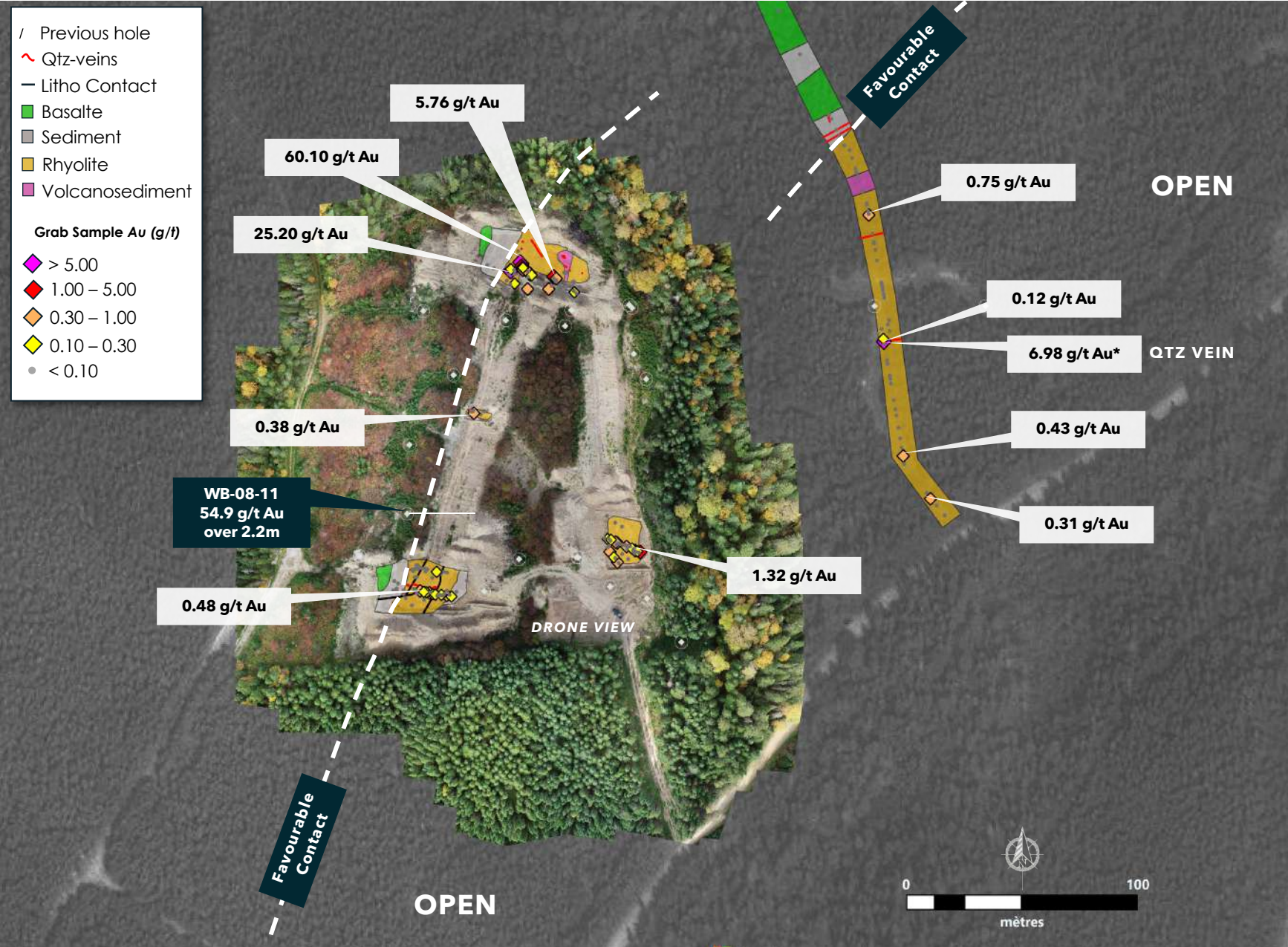
Hole ID	From (m)	To (m)	Lenght (m)	Au (g/t)
<b>WB-08-03</b>	<b>12,00</b>	<b>67,00</b>	<b>55,00</b>	<b>0,52</b>
<i>incl.</i>	28,00	66,00	38,00	0,72
<i>incl.</i>	50,00	59,00	9,00	2,10
<i>and</i>	56,00	59,00	3,00	3,29
<b>WB-08-04</b>	<b>6,00</b>	<b>47,00</b>	<b>41,00</b>	<b>0,68</b>
	<b>21,00</b>	<b>47,00</b>	<b>26,00</b>	<b>0,96</b>
<i>incl.</i>	29,00	44,00	15,00	1,26
<i>and</i>	38,00	39,00	1,00	5,00
<b>WB-08-05</b>	<b>6,00</b>	<b>70,00</b>	<b>64,00</b>	<b>0,21</b>
	<b>24,00</b>	<b>52,00</b>	<b>28,00</b>	<b>0,31</b>
<i>incl.</i>	39,00	42,00	3,00	1,17
<b>WB-08-08</b>	<b>87,00</b>	<b>98,50</b>	<b>11,50</b>	<b>0,19</b>
<i>incl.</i>	91,00	92,00	1,00	0,93



explorationpuma.com

TSXV : PUMA / OTCQB : PUMXF

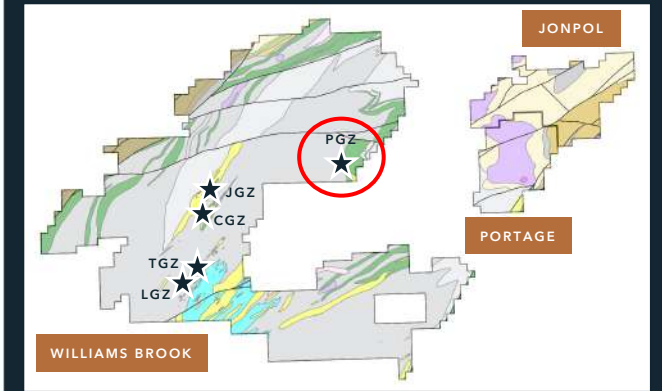
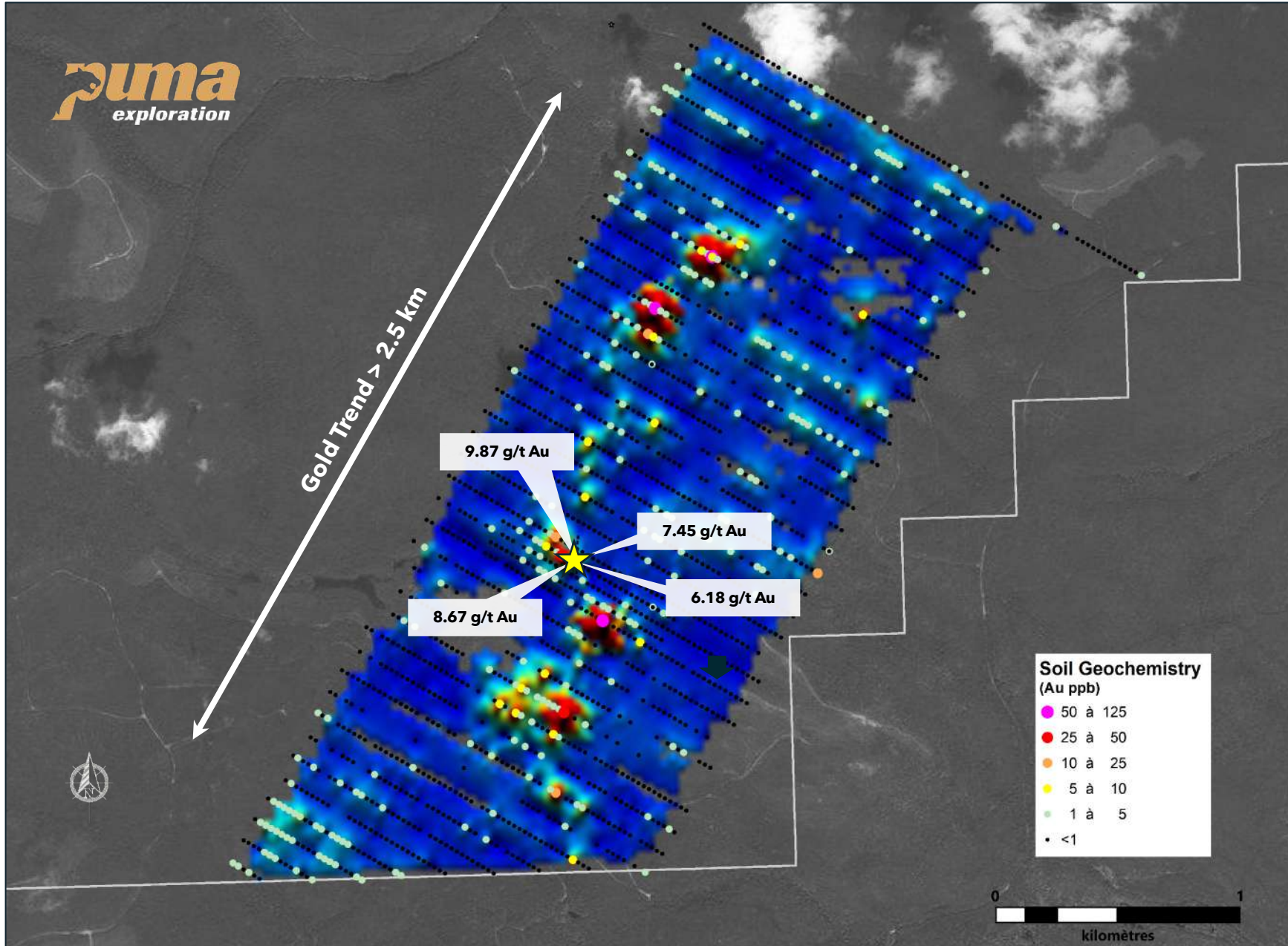
# COUGAR GOLD ZONE



## Drilling results

Hole ID	From (m)	To (m)	Lenght (m)	Au (g/t)
WB-08-11	22.00	24.80	2.80	54.90
WB-08-12	56,25	56,85	0,60	3,94
WB-09-27	14,20	15,30	1,10	1,54
WB-09-31	26,60	27,10	0,50	6,56

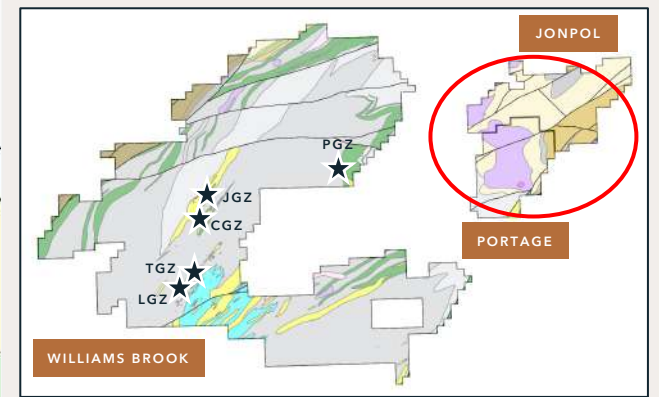
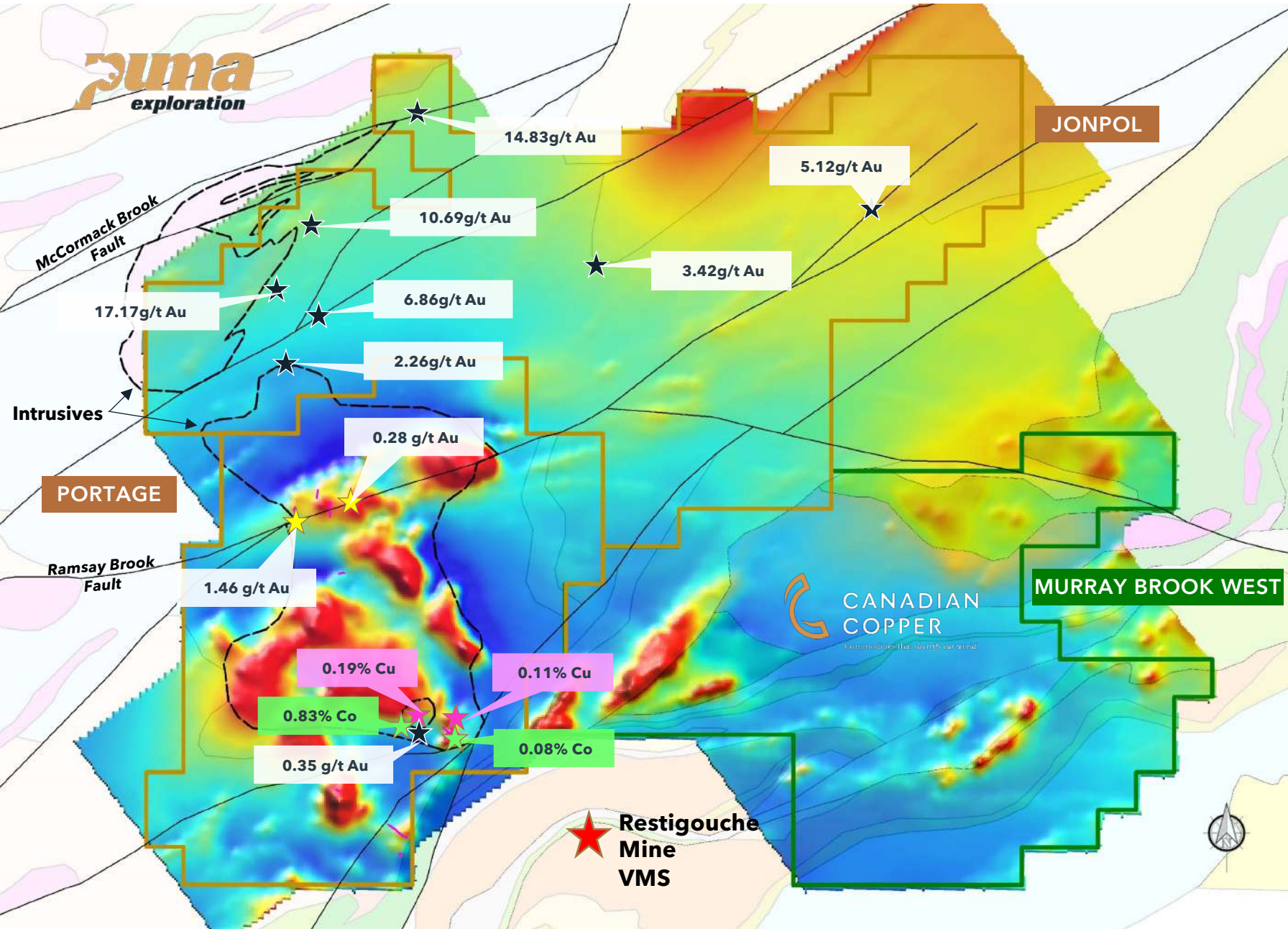
# PANTHERA GOLD ZONE



- Large soil survey completed in 2021 (1.5km X 3.0m)
- Similarities with other gold zones (Au within qtz-vein)
- Early-Stage area with significant gold potential
- Open in all directions



# JONPOL & PORTAGE PROPERTIES



## JONPOL MINERALIZATION

- Gold mineralization is commonly and spatially associated with gabbroic intrusives
- Selected Drill Results:
  - 1.13 g/t Au over 12.0m (incl. 3.46 g/t Au over 2.0m)
  - 1.37 g/t Au over 6.0m (incl. 8.02 g/t Au over 1.0m)
  - 3.89 g/t Au over 1.0m
  - 2.78 g/t Au over 1.5m

# Puma's Key to Unlocking Value



**1 Demonstrate scale**

---

**2 Demonstrate volume**








---

**3 Demonstrate grade**

Proven low-cost method to growing the Williams Brook's gold inventory

*With only C\$10M of expenditure, Puma already defined a high-grade gold zone that spans 750 m along strike, is 75 m wide and extends to 180 m depth.*

# Project Timeline

2019 \$400K INVESTMENT	2020 \$1M INVESTMENT	2021 \$2M INVESTMENT	2022 \$5M INVESTMENT	2023 \$3M INVESTMENT	2024-2026 \$15M INVESTMENT
<ul style="list-style-type: none"> <li>• Due diligence and site visit</li> <li>• Property acquisition</li> <li>• Adjacent acquisition with local prospectors</li> <li>• Data compilation</li> </ul>	<ul style="list-style-type: none"> <li>• Prospection</li> <li>• First trenching program at the O'Neil area</li> <li>• Mapping</li> </ul>	<ul style="list-style-type: none"> <li>• Stripping at Lynx</li> <li>• Large VTEM survey launched - covering 20 ha</li> <li>• Inaugural drilling program of 2,300 m</li> <li>• New gold discovery : <b>5.55 g/t Au over 50,15 m</b></li> </ul>	<ul style="list-style-type: none"> <li>• 10,000 m drilling program</li> <li>• Initial Met Program</li> <li>• MOU signed with the Pabineau first nation</li> <li>• Large regional trenching program</li> <li>• Initial stripping at Jaguar and Cougar Gold zones</li> <li>• Structural mapping in 2D - 3D : building a geological model</li> <li>• 2 km of soil sampling and drone mag survey</li> </ul>	<ul style="list-style-type: none"> <li>• Planned 6,000 m drilling :               <ol style="list-style-type: none"> <li>a. Demonstrate high-grade shoots at depth and along strike over 700m</li> <li>b. Extend strike length over 3.0 km to the NE</li> </ol> </li> <li>• Build the Williams Book gold camp by prospecting and trenching</li> <li>• Complete first trenching program at the Jonpol and Portage properties</li> </ul>	<ul style="list-style-type: none"> <li>• 50,000 m drilling program               <ol style="list-style-type: none"> <li>a. Build gold ounces at Lynx</li> <li>b. Demonstrate scale by drilling and defining new gold zones along the 12 km Lynx Gold trend</li> <li>c. Launch inaugural drilling of the Jaguar and Cougar Gold Zones.</li> </ol> </li> </ul>
					
					



# Share Structure & Financial Information

**\$24M Market Capitalization**

**Share Capitalization**

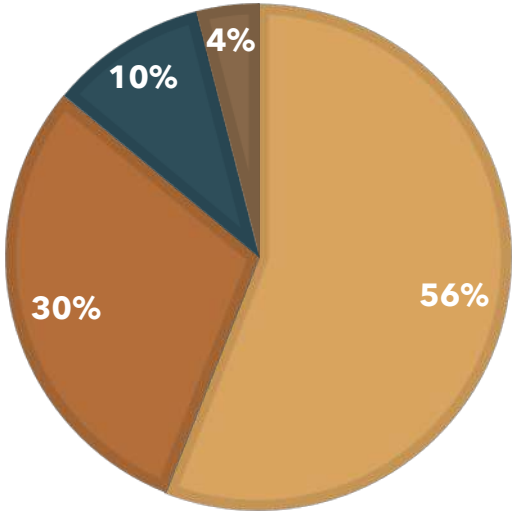
Shares Outstanding	137,248,838
Options (wt. av. \$0.28)	13,110,000
Warrants (wt. av. \$0.31)	18,227,722
Fully Diluted	168,636,560

**Current Financial Update**

Working Capital	~\$1 M
General and Administrative Costs	~\$30 k/month

**OVERVIEW**

■ Retail ■ Friends/Family ■ Institutional ■ Insiders



**Significant Shareholders**

Top 10 shareholders own 60%



# The Puma Team



**Marcel Robillard, P.Geo. /  
President & CEO**

Over 25 years experience in junior exploration. Past President of Geominex, a geology consulting firm. Has led Puma since 2009.



**Réjean Gosselin /  
Director & Executive Chairman**

Seasoned mining executive with over 42 years experience leading junior exploration companies.



**Dominique Gagné, P.Geo /  
Consultant & Chief Geologist**

Over 17 years experience on grassroots to advanced exploration projects in Eastern Canada. Puma's technical team lead since 2013.



**Mia Boiridy /  
Head of Investor Relations & Corporate  
Development**

28 years of experience in corporate management, with the last 10 years in the junior resource sector.



**Dr. Laura Araneda /  
Director**

New-Brunswick business leader with over 20 years experience in the mining sector. CEO of HIT Drilling.



**Jacques Dion /  
Director**

Over 30 years of experience in environmental assessment and waste management. Extensive experience partnering with First Nations communities.



**Michel Fontaine /  
Director**

Entrepreneur with > 20 years working in the mining sector. Founder of Windfall Geotek (TSXV: WIN).



**Richard Thibault, P.Eng. /  
Director**

Over 42 years experience in mining engineering, operations, management and consulting in North & South America and Southeast Asia.



## Board Members & Technical Team



# Contact us

**Marcel Robillard**  
**President & CEO**

president@explorationpuma.com  
1-418-750-8510

**Mia Boiridy**  
**Head Investor Relations and  
Corporate Development**

mboiridy@explorationpuma.com  
1-250-575-3305

175, rue Legaré | Rimouski  
(Quebec) Canada | G5L 3B9



explorationpuma.com

TSXV : PUMA / OTCQB : PUMXF